



BOWELL BCS FLAIL MOWER

For Medium & Larger Tractors With CAT II. 3-Point-Hitch

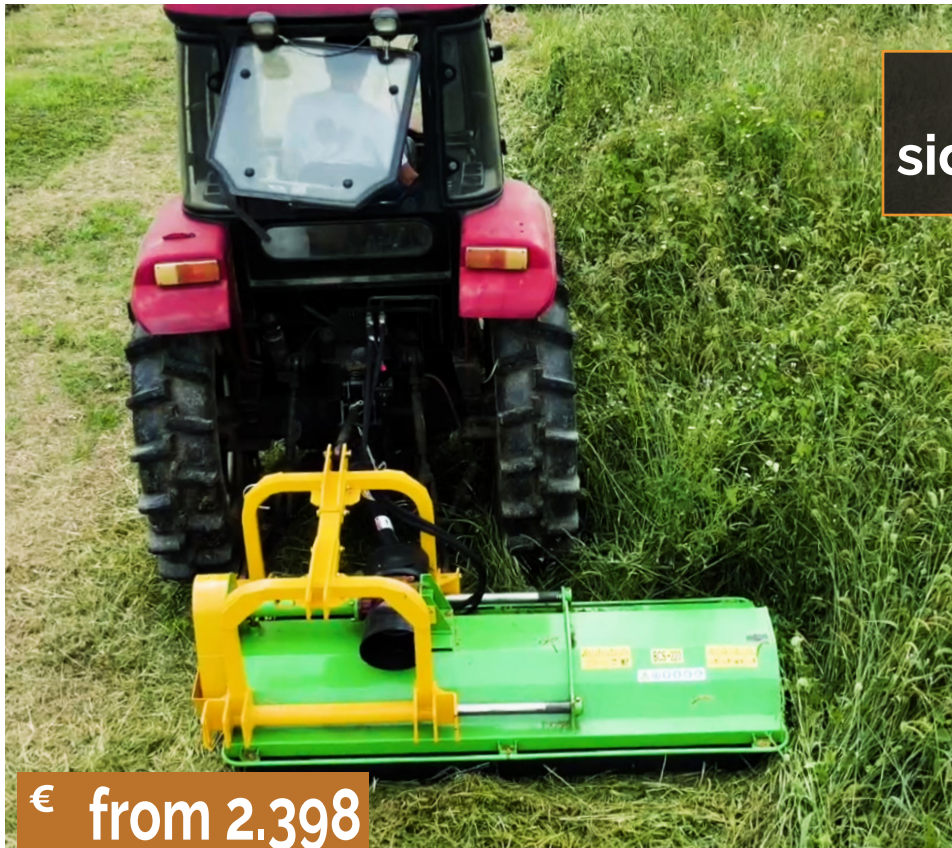


- ✚ With hydraulic side-shift
- ✚ Up to a grass height of approx. 100 cm
- ✚ 180 / 200 / 220 cm working width
- ✚ For 50 - 100 HP tractor



BOWELL BCS FRONT-REAR FLAIL MOWER

Heavy duty flail mower with hydraulic side-shift for medium and larger tractors with 40 hp to 100 hp engines with CAT II 3-point hitches front front and rear side mounting on tractors.



Hydraulic
side-shift system

24 months
Warranty

12 months for commercial customers



included

€ from 2.398



The Bowell BCS flail mower comply with all safety regulations and is CE tested following the 2006/42/EC machine directive.

Working widths of 160 / 180 / 200 and 220 cm

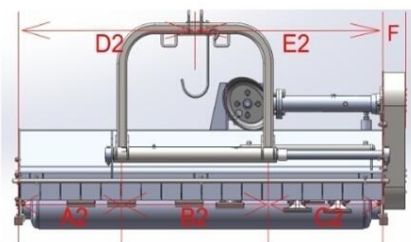
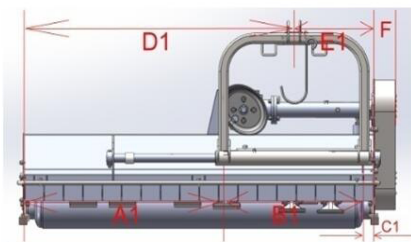
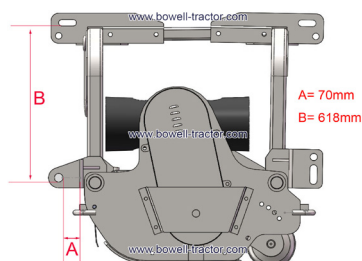
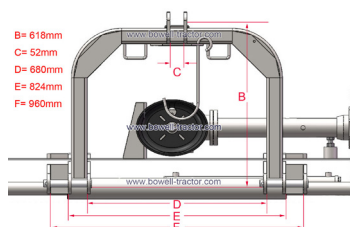
The Bowell BCS flail mower series is equipped with a very powerful double sided transmission made by the famous italian factory Comer, making it the perfect choice for medium and larger tractors as front or rear mower. With available working widths of up to 220cm and a hydraulic side-shift function of up to 500mm, Bowell's professional BSC mowers can be used almost anywhere.

- 1 SKF ball bearing mounted rotor shaft.
- 2 Bowell Power Efficiency Technology for 540 or 1000 RPM PTO shaft speed.
- 3 Double sided front and rear 3-point hitch to easy tractor mounting.
- 4 50 cm hydraulic side shift system.
- 5 Rear gate of the mower housing can be opened for easy maintenance or mowing very high grass.
- 6 1300 g forged flail hammers.
- 7 Double side COMER transmission made by COMER Italy for 540/1000 rpm PTO connection for from front and rear.



Technical Specifications Bowell BCS Flail Mower

DATA	BCS-180	BCS-200	BCS-220
Dimension (LxWxH)	195 x 110 x 99 cm	215 x 110 x 99 cm	235 x 110 x 99 cm
Total weight incl. PTO shaft	610 kg	644 kg	678 kg
Working width	1800 mm	2000 mm	2200 mm
Adjustable mowing height	20 – 75 mm		
Recommended grass height	< 100 cm		
Hydraulic side movement	500 mm (250 mm left/right)		
3-point hitch tractor	Cat II front + rear		
PTO shaft	540 / 1000 RPM clockwise		
PTO shaft length	1000 mm		
Hydraulic pipe length	1500 mm / 1900 mm		
Work performance (approx.)	6000-15000 m ² /h	7000-17000 m ² /h	8000-20000 m ² /h
No. of belts / width	4 / 17 mm		
Recommended tractor engine power	50-75 HP	60-80 HP	70-100 HP
Mower housing material thickness	4 mm		
Material strength side walls	6 mm		
Painting	powder coating		
Flail type	hammer		
No. of flails (exchangeable)	16	18	20
Weight of flail	1300 g		
Rotor shaft RPM	2140 (540 RPM PTO) 2270 (1000 RPM PTO)		
Rotor shaft diameter / wall strength	127 mm / 8 mm		
Rear roller diameter / wall strength	194 mm / 6 mm		
Wooden transport box (LxWxH)	210 x 117 x 118 cm	230 x 117 x 118 cm	250 x 117 x 118 cm



	A1 (mm)	B1 (mm)	C1 (mm)	D1 (mm)	E1 (mm)	A2 (mm)	B2 (mm)	C2 (mm)	D2 (mm)	E2 (mm)	F (mm)
BCS180	1034	725	53	1397	416	514	725	573	877	936	106
BCS200	1234	725	53	1597	416	714	725	573	1077	936	106
BCS220	1434	725	53	1797	416	914	725	573	1277	936	106



ONLINE-SHOP FOR TRACTOR ATTACHMENTS

Flail Mower, Verge Mower, Power Sprayer, Boom Sprayer, Back Hoe and Snow Blades



Contact

Telefon: + 49 (0) 4188 4444 773

E-mail: info@bowell-tractor.com

V&B Europe GmbH

Am Flidderberg 74

D-21256 Handeloh - Germany